



Fixed Bed Reactor System

SALIENT FEATURES

- Fixed, fluidized, trickle bed designs offered.
- Reactor volumes from 10mL to 100L.
- Designed up to 350 bar & 1000°C.
- SS316, Inconel, Hastelloy C etc.
- Explosion proof plants for hazardous area.
- Tabletop or skid mounted plants.
- Customisable systems for gas liquid feed combinations, series or parallel reactors, multi zone heating furnaces etc. with integrated controls, high level of safety, automation and SCADA software.

APPLICATIONS

- Catalyst screening
- Hydrogenation
- Fischer-tropsch process
- Hydro-cracking
- Vapor phase reaction
- Coal to syngas production
- Pyrolysis reactions
- Biomass gasification



- Micro reactor assembly for Liposome formation
- Reactor volume: 100 mL
- Pressure: 100 bar
- Temperature: 500 °C
- Material: Hastelloy C

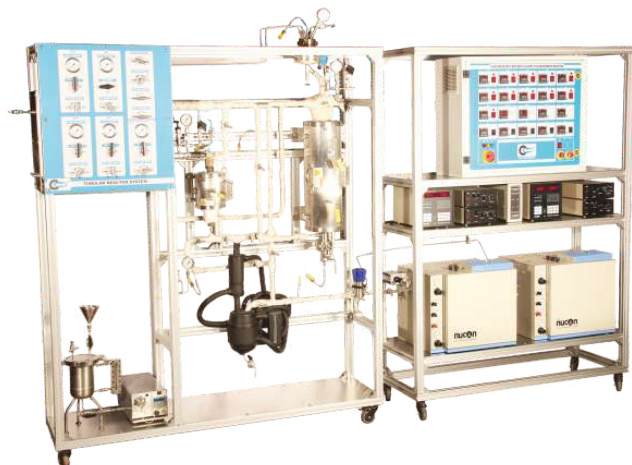


- 2 reactors with flexibility to connect in parallel & series
- Reactor volume: ~30mL
- Pressure: 5 bar.
- Temperature: 1000 °C.
- Materials: Inconel



Table Top Reactor System (TTRS)

- Reactors: 2 nos.
- Pressure: 100 bar
- Temperature: 700 °C
- With gas chromatograph

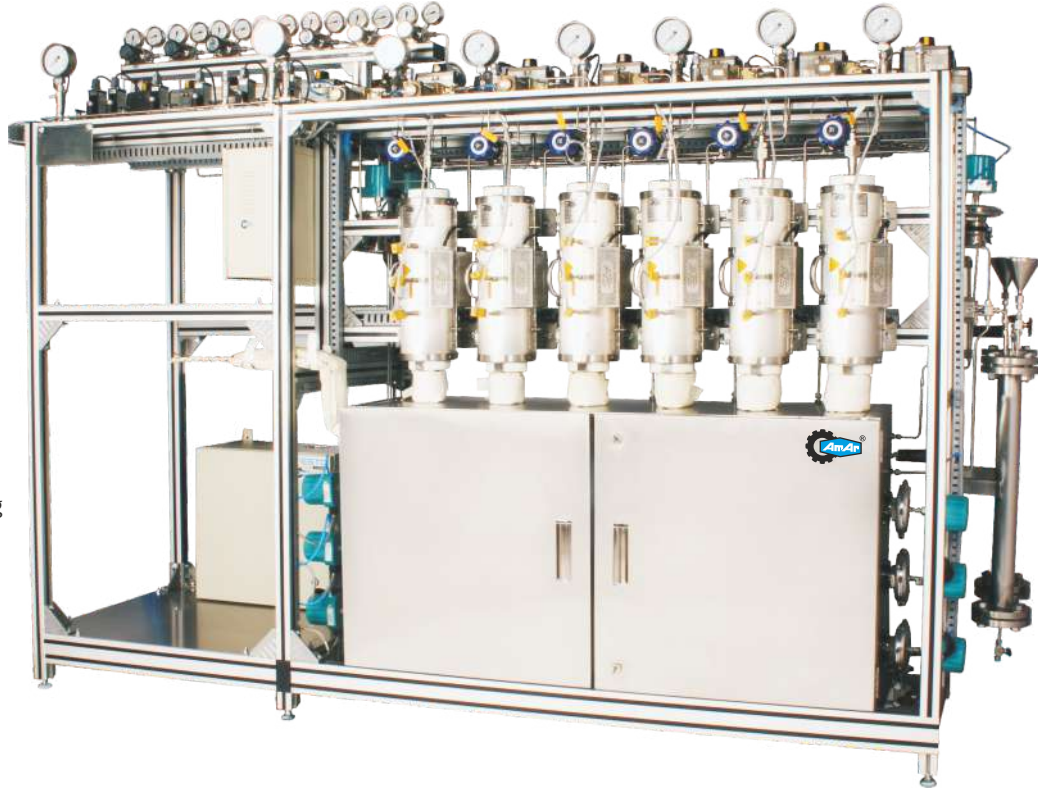




ACTIVESITE

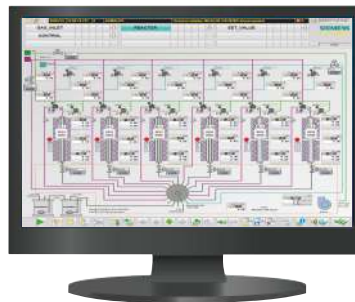
Fixed Bed Reactor System

High throughput multi tube reactor system for catalyst screening



SYSTEM SPECIFICATIONS

- Reactor volume: 6 Nos- parallel- 10 to 100mL same or of different volumes (optional: upto 16 nos in parallel).
- Design pressure: 100 bar
- Design temperature: 900 °C
- Material: SS 316, Inconel, Hastelloy C, etc.



Pilot scale tubular reactor with purge panels for continuous biojet fuel production